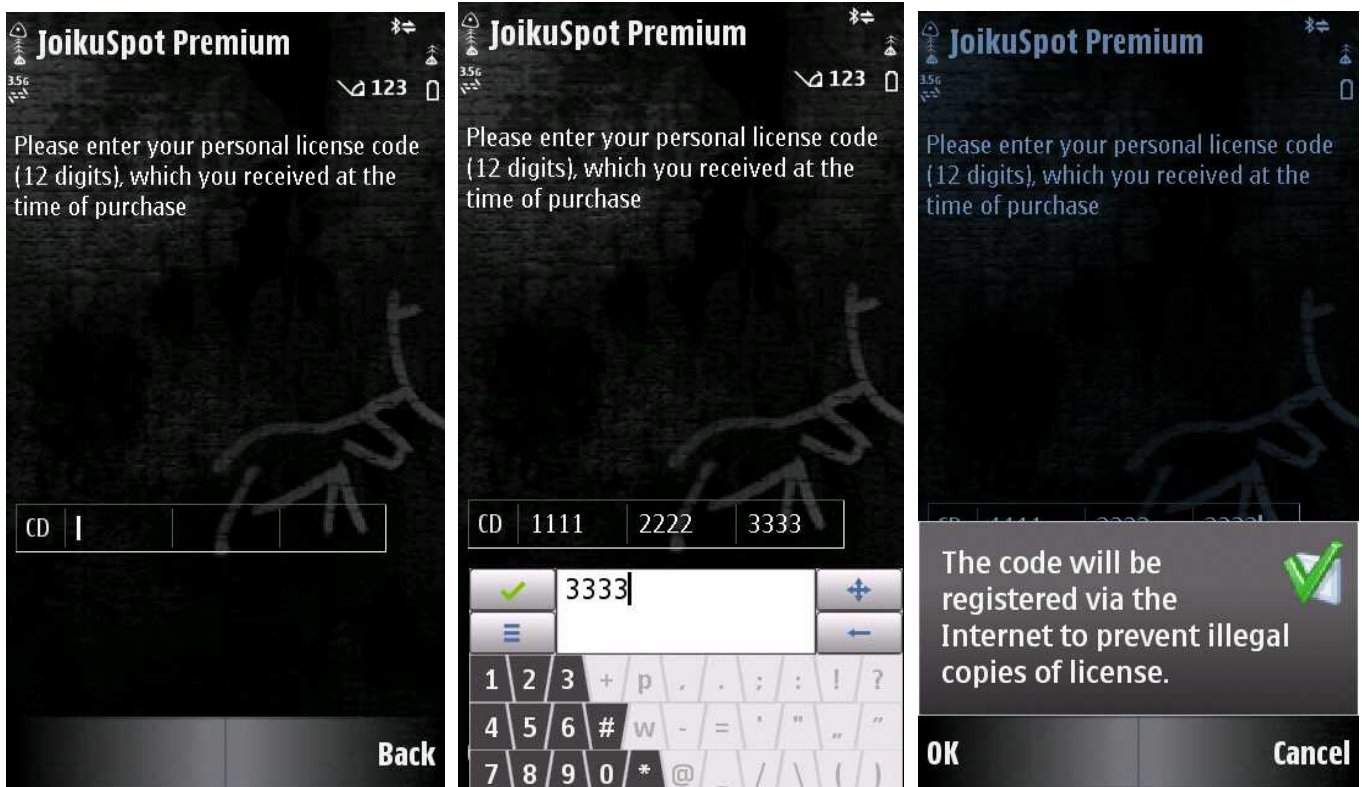
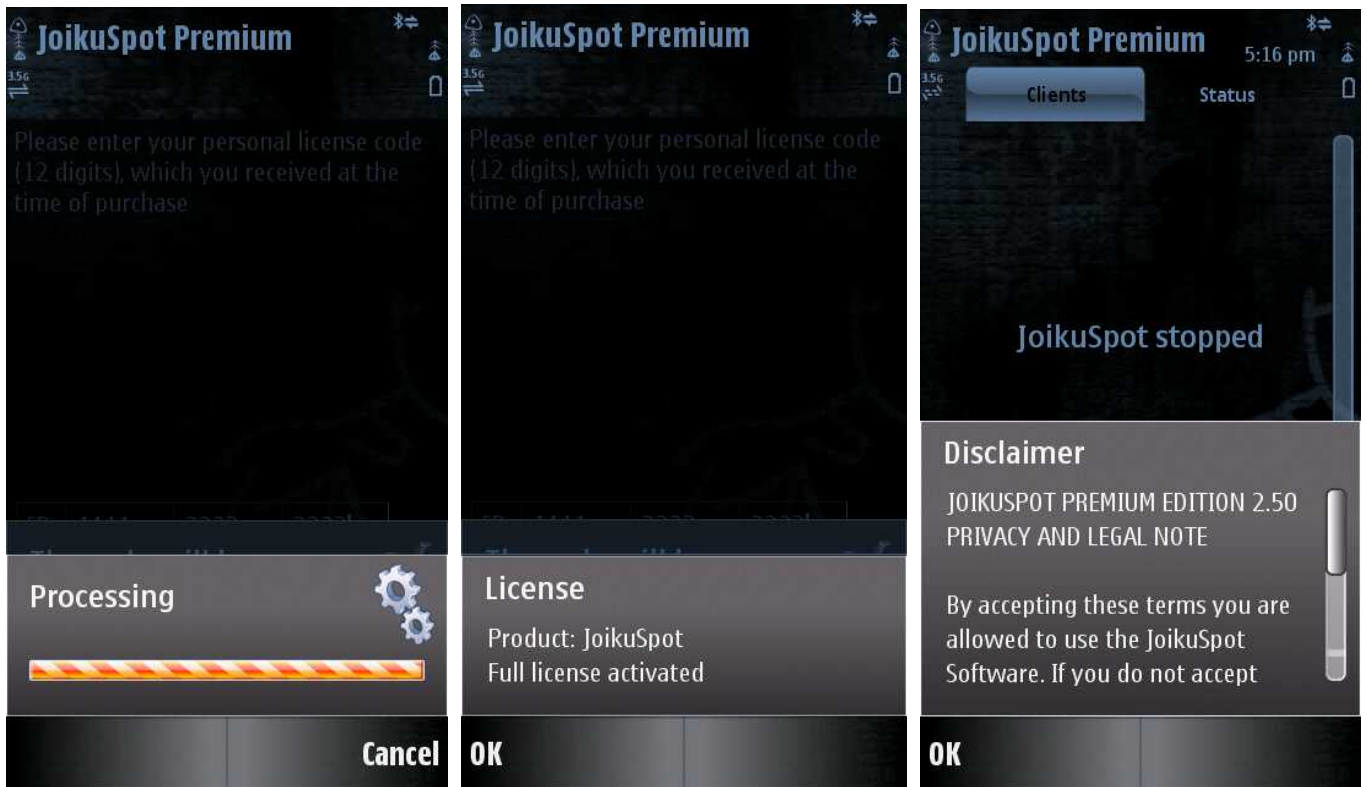


How Do I Activate My JoikuSpot Premium?

Congratulations for purchasing JoikuSpot Premium Licence from www.joikushop.com. For any questions, please contact our Customer Support by following the HELP link at www.joikushop.com.

With your purchase you have received a 12-digit personal license key CD xxxx xxxx xxxx to your e-mail. Enter the license key in JoikuSpot in order to activate it. You can find JoikuSpot file in your phone under Menu – Applications (or Installations), after having installed the software.





After a successful registration of the license key you are now ready to use JoikuSpot and to share your phone's 3G internet connection over Wi-Fi (WLAN) to your laptop, iPod or other WLAN device. The application will simply ask you to "Share your internet connection", and by answering "Yes", you will turn your mobile phone into a very powerful Mobile Wi-Fi (WLAN) hotspot.

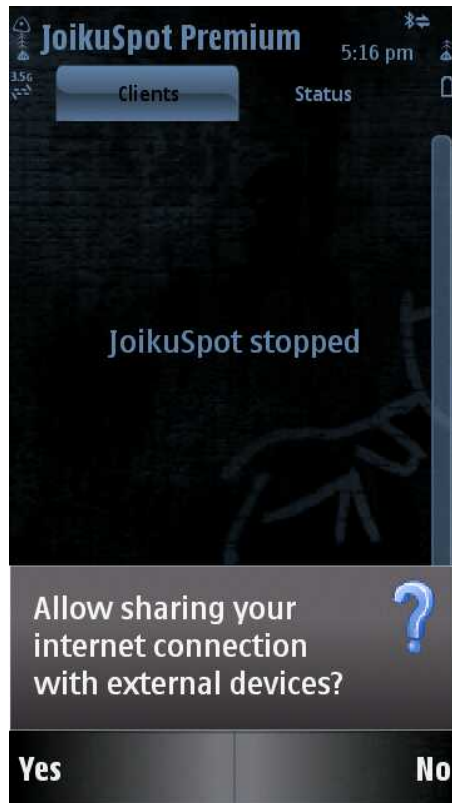
Please make sure you select your operator's Internet access point (typically called "Operator X Internet") for opening the JoikuSpot connection. WAP, MMS or WLAN Access Points will not work. After a successful connection creation, other devices can now see your JoikuSpot HotSpot via WLAN and connect wirelessly to internet by using your phone as a 3G modem.

For issues in establishing the connection, please check first that:

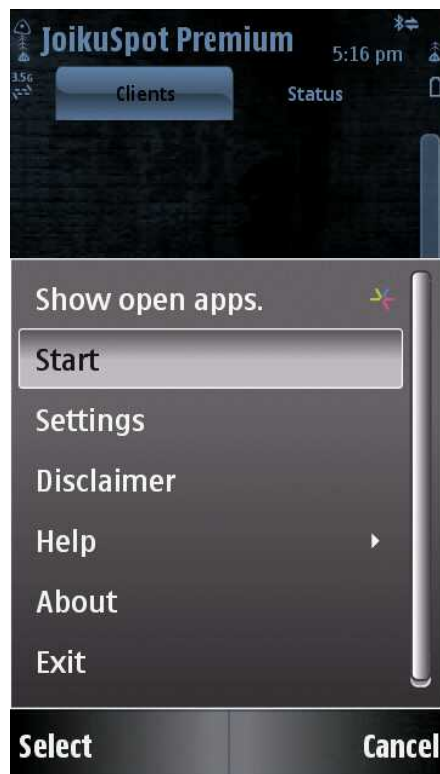
- You have the latest firmware in your phone, see www.nokia.com/softwareupdate
- You have only one JoikuSpot running and installed on your phone
- Your laptop allows ad hoc WLAN connections
- You have your operator's Internet access point selected.

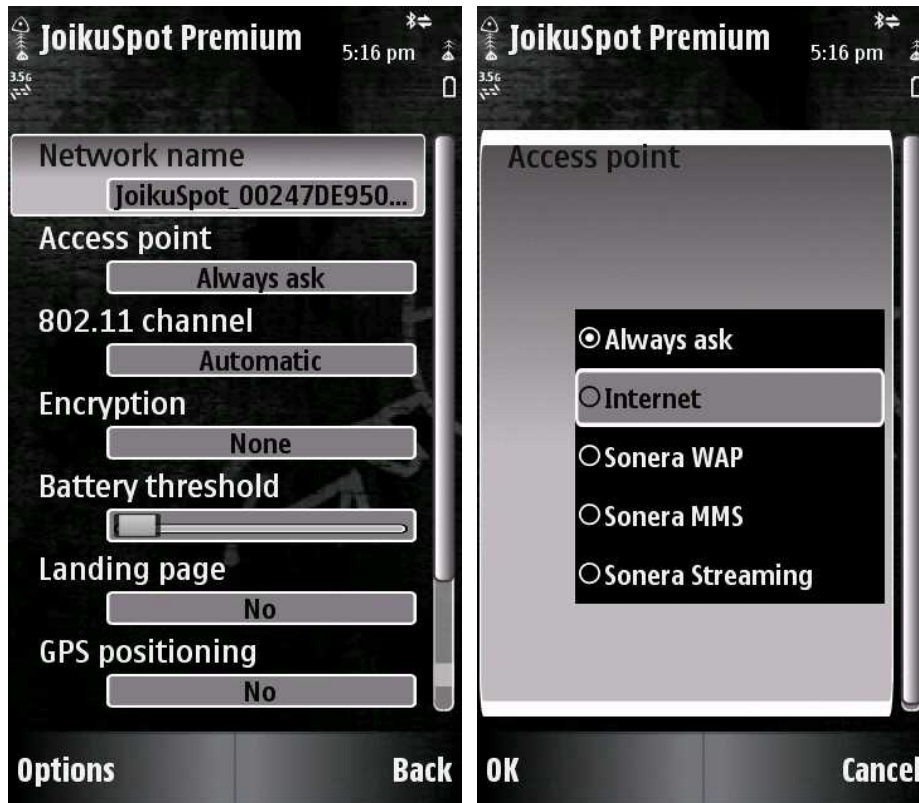
If the issue remains, please view the JoikuSpot FAQ (under www.joikushop.com HELP) or contact our customer support for assistance.

When you want to maximize your Joikuspot connection speed, contact your operator for a higher speed mobile data plan, preferably with flat rate. Some operators already offer for example 2 Mb flat rate data plans with unlimited data transfer. This way your JoikuSpot connection is fast and carefree also when you have several devices connected.



By selecting 'No' you can change your JoikuSpot settings such as hotspot's external name and security level. Click "Options" and then "Settings" to modify your JoikuSpot configuration.





Make sure you select your Operator's normal Internet connection as your JoikuSpot access point. You can also adjust for examples Network name, which is your JoikuSpot hotspot's external name that is shown to laptops and other devices with WLAN. You can also set Encryption level according to your security preferences.

By selecting "Landing page on" you will be automatically connected to our Joiku-AppStore at www.joikushop.com at the start of your JoikuSpot connection with your laptop's web browser.

Please refer to JoikuSpot Premium User Guide for more instructions.

Visit www.joikushop.com for more interesting mobile software offerings. Get your FREE Joiku mobile theme to decorate your phone display at www.joiku.com.

ADDITIONAL READING:

- [JoikuSpot User guide](#)
- [JoikuSpot Premium FAQ](#) (for issue resolution)